



# 2024 Pinnacle Awards of Excellence





*The  
Natural Stone Institute  
would like to  
congratulate our winners.*



*Thank You to Our Gold Level Sponsors*





# Recognizing Excellence in the Natural Stone Industry

AWARD	PAGE
<b>Grande Pinnacle Award</b> .....	4-5
An exclusive Grande Pinnacle award, sponsored by Marmomac, is given to the best project across all categories. This award is bestowed upon the Natural Stone Institute member company and also includes a trip to Marmomac in Verona, Italy for the architect or designer of record for the project.	
<b>Pinnacle Awards of Excellence</b> .....	6-20
Natural Stone Institute’s prestigious Pinnacle Award honors stone companies around the world for projects that stand out above the rest.	
<b>The 2024 Pinnacle Jury Included:</b>	
David Castellucci, President, (ret.) at Natural Stone Consulting Group in Melbourne, Florida	
Charles “Chuck” Muehlbauer, Technical Director at the Natural Stone Institute	
Dan Rea, Sr. VP Sales & Marketing, (ret.) at Coldspring in Coldspring, Minnesota	
Keith Boswell, FAIA, Consulting Partner at Skidmore, Owings & Merrill in San Francisco, California	
Erik Dayrell, Associate Principal at Hoerr Schaudt in Chicago, Illinois	
<b>Excellence in Leadership Award</b> .....	21
The Excellence in Leadership Award recognizes an individual who provided exemplary leadership for a key committee or initiative.	
<b>Natural Stone Scholarship</b> .....	21
The Natural Stone Scholarship was established to provide educational opportunities for aspiring fabricators, installers, or administrative apprentices interested in furthering their careers within the natural stone industry.	
<b>Women in Stone Empowerment Scholarship</b> .....	21
The Women in Stone Empowerment Scholarship recognizes Natural Stone Institute members with a strong passion to grow their career within the stone industry. Applicants are considered who have not yet had the opportunity to attend one of the key industry events: TISE, Coverings, or an annual Natural Stone Institute Study Tour.	
<b>Natural Stone Craftsman of the Year</b> .....	22
The Natural Stone Craftsman of the Year Award is designed to recognize the skilled individuals who craft and install stone and train the young people who are the future of the natural stone industry. There is nothing more important than excellence in craftsmanship to get the most out of nature’s finest and most beautiful building material.	
<b>Women in Stone Pioneer Award</b> .....	24
The Women in Stone Pioneer Award recognizes an advocate within the stone industry for their role in recruiting, retaining, and advancing women. The recipient’s performance in promoting women should be exemplary, honorable, and inspirational.	
<b>Person of the Year</b> .....	26
The Person of the Year Award is an important annual recognition chosen by the association leadership team. Following the tradition of the award, this year’s Person of the Year has given exceptional contribution and leadership to Natural Stone Institute, as well as mentoring and guidance to its executive team.	
<b>Migliore Award for Lifetime Achievement</b> .....	28
The Migliore Award for Lifetime Achievement was established in 2003 to recognize an individual who has made extraordinary contributions to the natural stone industry and Natural Stone Institute. The award is named for Marble Institute of America’s long-time technical director, the late Vincent R. Migliore, who was the first recipient.	
<b>David Fell Spirit of Service Award</b> .....	30
The David Fell Spirit of Service Award is presented to a company and/or individual who participated in the Gary Sinise Foundation R.I.S.E. program to recognize their efforts for demonstrating the qualities and characteristics of leadership within their company, the community, and beyond.	

Disclaimer: Images and notations of project team members presented herein have been supplied to the Natural Stone Institute by the member company submitting the award entry. Every effort has been made for accuracy and thoroughness. The Natural Stone Institute is not responsible for errors or omissions in this documentation, which is intended to reflect the portion of a building, landscape, or other design project in which the submitting member company has been involved.



# *Grande Pinnacle Award*

Washington National Cathedral  
South Transept Grand Pinnacles  
Washington, DC




Photo courtesy of Lorton Stone LLC



Photo courtesy of U.S. Geological Survey/photo by William Leith

## Renovation/Restoration

### PINNACLE AWARD RECIPIENT

**Lorton Stone LLC**   
Springfield, Virginia  
Stone Installer

### Other Project Team Members

**Washington National Cathedral**  
Client

**Wiss, Janney, Elstner Associates**   
Architect/Engineer

**Polycor**   
**(Indiana Limestone Company)**  
Stone Supplier/Fabricator

### Stone

**Indiana limestone**



Photo courtesy of Lorton Stone LLC

On August 23, 2011, a rare 5.8-magnitude earthquake struck the mid-Atlantic and caused significant damage to the Cathedral. In the years since, repair crews have been working their way around the building in phases to replace damaged stone, shore up wobbly pinnacles and reinforce the Cathedral to protect against future damage.

In summer 2023, crews finished a portion of the work to rebuild a massive pinnacle about 20 stories off the ground on the southwest corner of the south transept. During the quake the pinnacle twisted clockwise, rotating its columns and pillars out of place. Currently crews are dismantling and rebuilding the southeast corner of the south transept.

The pinnacle did not collapse, but it was so off kilter and dangerously close to falling that crews were forced to dismantle it in 2017 and lowered all 93 pieces of stone on the ground. The pinnacles were an unusually complicated jigsaw puzzle because each is supported by a row of slender columns around a hollow center. Crews had to create an entirely new system of stainless-steel support rods to accommodate the unusual construction design.

A large crane was required to dismantle and rebuild the pinnacle. During the dismantlement, special care had to be taken to ensure pinnacle stones did not fall on scaffolding. Some stones were held in place by the weight of the pieces above and nylon strapping. Along with the rebuild, the following stone repairs were performed: Dutchman, 100% repoint of stone joints, pinning, crack repairs, grout injections, and patching. One especially difficult aspect of this project was the deep core drilling that had to be done dry. Some core drill depths were over 35'. On many occasions, the core drill team hit steel at deep depths and had to relocate the hole.



Photo courtesy of Lorton Stone LLC



## Architectural Carving/Lettering/Sculpture

# Boston Children's Hospital Wishingstone Garden Boston, Massachusetts



### PINNACLE AWARD RECIPIENT

**Coldspring** 

Cold Spring, Minnesota  
Stone Fabricator/Supplier

### Other Project Team Members

**Mikyoung Kim Design**  
Landscape Architect

**Shepley Bulfinch Richardson & Abbott**  
Architect

**Xquisite Landscaping**  
Stone Installer

### Stone

**Charcoal Black® granite**  
**Echo Lake® granite**  
**Golden Brasil granite**  
**Silver Cloud® granite**

Boston Children's Hospital (BCH) embarked on a transformative journey in 2015 to revitalize its Longwood Medical District campus, driven by escalating demand and complex cases. Central to this endeavor is the Hale Building, an 11-story vertical hospital expansion completed in 2018. Seamlessly integrating with the existing facility across six levels, the Hale Building employs cutting-edge technology to enhance daily care and expand patient capacity significantly. Comprising 28,000 square feet, the outdoor spaces, including the Rooftop Healing Garden and Wishingstone Garden, foster hope, freedom, play, and contemplation. Additionally, an indoor sanctuary within the Hale Building serves as a healing garden for the most vulnerable patients.

Completed in 2018, the 8,000-square-foot Rooftop Healing Garden on the 11th floor offers a scenic retreat with lush landscaping and various seating options. On the ground level, the 16,312-square-foot Wishingstone Garden, completed in 2023, draws inspiration from the bedrock beneath the hospital. Crafted with textured granite, it features curving benches, planter walls, and 21 wildlife and "fossil" art installations, providing a stimulating and relaxing sensory experience.

The fabricator, renowned for extensive stone resources and expertise in complex fabrication, played a pivotal role in bringing these green spaces to life. Collaborating closely with BCH, they ensured precision in crafting elements like the custom-sculpted granite animals and intricate landscaping, overcoming challenges such as the weight of large stone pieces through innovative techniques like carving hollow areas during CNC fabrication.

These outdoor spaces not only expand BCH's campus but also elevate care quality by providing additional areas for reflection, connection, and peace. Through meticulous design and craftsmanship, the Wishingstone Garden and its counterparts stand as enduring oases, offering solace to all who visit for years to come.





## Architectural Carving/Lettering/Sculpture

# Saint Louis University High School Chapel of the Beloved Disciple

Saint Louis, Missouri



All photos courtesy Rugo Stone, LLC.

### PINNACLE AWARD RECIPIENT

**Rugo Stone, LLC** 

Lorton, Virginia

Stone Consultant/Supplier/  
Fabricator/Installer

### Other Project Team Members

**Studio Totus**  
Architect

**Tennessee Marble Company**   
Stone Fabricator/Quarry

### Stone

**Bianco Carrara marble**  
**Champlain Black marble**  
**Paonazzo marble**  
**Arabescato Corchia marble**

The Saint Louis University High School Chapel of the Beloved Disciple renovation project stands as a testament to the harmonious blend of classical craftsmanship and modern technology. Rugo Stone's scope of work included furnishing and installing a marble altar of sacrifice and a marble ambo with a stained wood bookrest.

The altar as well as the ambo were adorned with cubic, 8-3/8" thick Bianco Carrara marble mensa tops featuring classical moldings and delicate hand-carved egg and dart detailing. The altar and ambo were further enhanced with cubic carved marble columns and custom-designed, highly ornate Corinthian capitals that seamlessly matched the existing 100-year-old capitals.

The arches in the altar and the ambo received Paonazzo marble inlays, matching the existing decor. All the marble elements were installed using stainless steel anchor connections, developed in-house by Rugo's project engineer and communicated through detailed shop drawings. The project culminated in a breathtakingly successful renovation, receiving high praise from the Saint Louis University project team for performance and timely delivery.

One of the primary challenges was matching every detail of the existing marble in the church, which was of utmost importance to the client. Rugo's team excelled in developing highly precise drawings and 3D models, obtaining approval, and producing new stone that impeccably matched the existing marble.

This project exemplifies the use of modern CNC machining technology in combination with traditional hand-carving methods. The detailed and intricate stonework, from the hand-carved egg and dart detailing to the custom-designed Corinthian capitals, demonstrates exceptional craftsmanship and dedication to fine art stonework. The Saint Louis High School Chapel renovation project not only preserves the historical integrity of the chapel but also exemplifies the highest standards of craftsmanship and innovation in stonework.





## Commercial Exterior

# Burley Temple

## Burley, Idaho



All photos courtesy KEPCO+

### PINNACLE AWARD RECIPIENT

**KEPCO+** 

Salt Lake City, Utah  
Stone Installer

### Other Project Team Members

**Naylor Wentworth Lund Architects**  
Architect

**Ghirardi Stone Contractors**   
Stone Supplier/Fabricator

**Stone Trends International**   
Stone Consultant

**Okland Construction**  
General Contractor

### Stone

**Bianco Sardo granite**

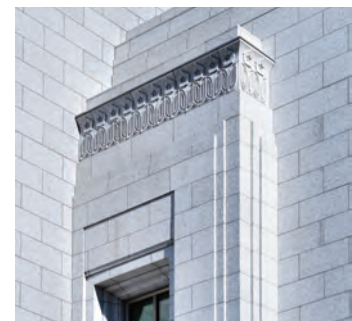
A design-assist project, the Burley Temple reflects the high-quality and precision installation achievable through a collaborative team effort. Clad with 45,000 SF of lightly honed Bianco Sardo granite, the project's facade features an ornate steeple and stepped cornices and window surrounds, with the curvature of the main window mirrored in the stone pilaster base.

During design-assist collaboration meetings, the stone installer identified several details that could be altered to enhance aesthetics while at the same time improving the schedule, performance, and/or budget. For example, the owner desired a cubic-look to the stonework, but many pieces were designed with a butt-epoxied joint. The installer worked with the team to re-design pieces with a mitered epoxy joint instead to improve overall aesthetics within the given budget.

To reflect the importance of the area's agricultural industry, the potato flower was incorporated into the intricately carved frieze design. After reviewing the frieze mock-up, it was determined that the details would be difficult to see when viewing from the ground. The installer worked closely with the fabricator to craft 5 additional design options that enhanced the flower's detailing. One of the revised options was ultimately selected for fabrication.

The installer also offered enhancements to the steeple design and budget during the design assist phase. To reduce its overall weight, the installer proposed utilizing a 1.5cm veneer and attaching the elements to sheet metal utilizing structural silicone to achieve such tight tolerances that it created the appearance of thick cubic pieces while creating budget savings for the owner.

The care and collaboration invested in the design-assist phase resulted in a seamless and timely installation. The dedication for the building will be held in 2025.







## Commercial Exterior

# National Air and Space Museum Washington, DC



All photos courtesy Rugo Stone, LLC.

The Smithsonian's National Air and Space Museum embarked on a multi-year renovation in 2018 to address critical issues with the building's original stone façade, which had developed extensive warping and cracking over the years. Known as hysteresis, this deterioration was exacerbated by the spray-applied urethane foam insulation on the back of the stone panels, posing a risk of stones falling from the building.

The renovation project set forth several stringent performance criteria for the new exterior wall assemblies such as durability, air infiltration, water and thermal barrier, blast and wind load resistance, fire propagation limitations, and the longest service life. After a collaborative vetting process, Coldspring's Lac Du Bonnet granite was ultimately selected as it provided a proper color range and acceptable characteristics to closely replicate the building's appearance.

A team consisting of Rugo Stone, Coldspring, PICCO Engineering, Façade Concepts, and Eclad were brought together to assist in developing a blast-resistant wall cladding system. This project's engineering challenges included a complex mullion geometry for a fully sealed, blast-resistant wall, particularly at corners due to support conditions.

The project management and installation were led by key Rugo Stone staff. Over the span of 7 years, Rugo Stone installed 58,236 linear feet of mullions, 158,894 sq ft of insulated metal panels, 264,331 linear feet (50 miles) of gasket, 8,300 feet of Dow 123 tape, and 15,664 granite panels and copings.

Rugo Stone employed a variety of mast climbers and rigging equipment to handle, move, and install the stone panels at different heights on the 83-foot-tall building facades. They also performed all interior stone fabrication and installation for hundreds of linear feet of profiled marble base door surrounds and benches, a great example of the recyclability of natural stone.



### PINNACLE AWARD RECIPIENTS

**Rugo Stone LLC** 

Lorton, Virginia

Stone Consultant/Installer

**PICCO Engineering** 

Concord, ON Canada

Stone Engineer

**Coldspring** 

Cold Spring, Minnesota

Stone Supplier/Fabricator

**Eclad** 

Bridgeview, Illinois

Façade System Manufacturer

### Other Project Team Members

**Quinn Evans Architects**

Architect

**Smithsonian Institution**

Client

**Façade Concepts, Inc.**

Façade System Designer

**Structural Stone LLC** 

Stone Supplier

### Stone

**Lac Du Bonnet® granite**  
**Chelmsford Grey® granite**  
**Mesabi Black® granite**



## Commercial Exterior

# National Library of Israel Jerusalem, Israel



All photos by Gay Ronen Photography

### PINNACLE AWARD RECIPIENT

**A. Grebelsky & Son** 

Jerusalem, Israel

Stone Supplier/Fabricator

### Other Project Team Members

**Herzog & de Meuron Basel Ltd**

**Mann-Shinar Architects**

Architects

### Stone

**Jerusalem Gold limestone**

The new National Library of Israel, which opened its doors to the public in October 2023, holds the world's largest collection of Jewish heritage treasures, and is an essential stop for any Jerusalem visitor interested in culture and architecture.

Designed by world renowned architects Herzog & de Meuron and local partner Mann-Shinar the distinctive 45,000-sqm landmark building juxtaposes the traditions of great libraries and modern architecture, while adhering to the Jerusalem municipal code requiring all buildings be faced with local stone.

Four external facades and the rooftop were designed in Jerusalem Gold limestone, following a principle that not a single stone would be cut in a square or rectangular shape. The extraordinary design is enhanced by windows created in the openings between curved ledges of adjacent stones, forming abstract shapes and patterns reminiscent of ancient text.

A. Grebelsky & Son, a 3-generation family-owned business, provided stone for the entire project from their Mitzpe Ramon quarry, and addressed the project's unique challenges by combining innovation with traditional craftsmanship. Grebelsky used state-of-the-art CNC machines to produce hundreds of differently shaped curved pieces for the claddings and created windowsills by cutting out curved parts from cubic blocks of stone. All stones used in the project were given an ancient fine-chiseled texture resemblant of Jerusalem's Western Wall.

To meet the meticulous quality standards, dry-mockups of 150-sqm each were laid on the factory floor and inspected by the architects who signed off on every stone.

Jerusalem Gold limestone was also sourced for Letters of Light, an outstanding sculpture by world-renowned artist Micha Ullman, who used 22 giant rocks to form Hebrew letters in a play of light and shadow using negative space. Here, the artist chose a natural-cleft finish on each side of the stone, a challenging requirement in stones of these very large sizes.





## Commercial Exterior

# Rolex Boutique

Toronto, ON Canada



All photos courtesy PICCO Engineering

### PINNACLE AWARD RECIPIENTS

**PICCO Engineering**   
Concord, ON Canada  
Stone Engineer

**Traditional Cut Stone**   
Mississauga, ON Canada  
Stone Fabricator

### Other Project Team Members

**PARTISANS**  
**Arturo Tedeschi**  
Architects

**Finbar Sheehan**  
Stone Installer

### Stone

**Burgundy White limestone**  
**Absolute Black granite**

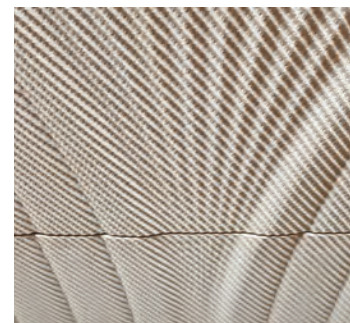
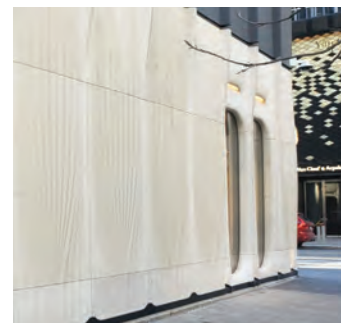
Located in Toronto's prestigious shopping district, the Rolex Boutique epitomizes luxury and innovation. Featuring Burgundy White limestone and Absolute Black granite at its base, this project highlights superior natural stone design, fabrication, and installation. The boutique's transformation showcases collaborative design and advanced technology integrated with traditional craftsmanship.

The design aimed to create an architectural presence reflecting Rolex's timeless elegance. The façade's fluid curves around windows and doors contrast with the modernist high-rise above, harmonizing natural stone with steel. This blend echoes Rolex's intricate craftsmanship and attention to detail.

The project faced significant challenges, starting with selecting and procuring the limestone. Large, cubic stone pieces with complex geometries required precise digital modeling and thorough selection for consistency and quality. Advanced 3D modeling software developed intricate shapes and patterns, essential for engineering analysis and creating robust connection systems and support frames. Custom stone attachments ensured compatibility with the unique stone forms, some over 7 feet tall.

The urban location and minimal clearances necessitated meticulous planning and coordination for transporting and handling the large stones. Custom crating solutions and specialized lifting equipment ensured safe delivery and installation. Precision in installation maintained the design's integrity with tight tolerances and careful alignment.

Incorporating the new stone façade with the existing building was complex. Detailed 3D scans ensured the existing structure was accurately considered for a seamless fit. The stone had to align precisely with the existing façade mullions while accommodating energy performance and maintenance requirements.





## Commercial Exterior

# Saint Nicholas Greek Orthodox Church and National Shrine

## New York, New York



Photo by Royce Douglas

### PINNACLE AWARD RECIPIENT

**AVRO Consult Engineering**   
New York, New York  
Stone Engineer

### Other Project Team Members

**Koutsomitis Architects PC**

**Santiago Calatrava  
Architects & Engineers**  
Architects

**Venus Marble Group SA**  
Stone Supplier/Fabricator

**MG McGrath  
Architectural Glass & Glazing**  
Stone Installer

**Thornton Tomasetti**  
Façade Consultant

**Stone**

**Pentelikon marble**

Since its founding in 1916, The Saint Nicholas Greek Orthodox Church and National Shrine in New York City has been the anchor for a vibrant New York neighborhood. In the 1970's the church building was overshadowed by the World Trade Center's Twin Towers. Destroyed on September 11th, 2001, the rebuilt church reopened in 2022 as a Shrine for the Nation and a place for remembrance.

Inspired by the Hagia Sophia, the new church design is a safe haven for prayer and remembrance. The church façade is Pentelikon white and grey marble from Dionysos, Greece with the same chemical composition and texture as the Pentelic marble of the Parthenon. Sharing the form and material of two UNESCO World Heritage sites, the Shrine refers to history and offers hope for the future.

Stone cladding at opaque façade areas are honed (white) or bush hammered (grey) 2-1/2 in. thick panels anchored to the concrete base building structure. Through the dedication of the fabrication and installation team, the building's aligned façade and joint treatments give the appearance of loose-laid massive stone cladding.

Facades at the central dome and above the West Entry incorporate translucent panels with thin stone sandwiched between glass plates. The backlit Shrine is a beacon of light onto the World Trade Center memorial.

A metaphoric and physical symbol of hope, The Saint Nicholas Greek Orthodox Church and National Shrine's timeless massing articulates graceful curves, corners, and pleats in an inviting stone facade. In the words of His Eminence Archbishop Elpidophoros of America, "This Shrine will be a place for everyone who comes to the Sacred Ground at the World Trade Center, a place for them to imagine and envision a world where mercy is inevitable, reconciliation is desirable, and forgiveness is possible."



Photo by Joe Brenna



Photo by Michael Young



Photo by Royce Douglas



## Commercial Interior

# Travis County Civil and Family Courts Facility Austin, Texas



All photos courtesy of Camarata Masonry Systems

### PINNACLE AWARD RECIPIENT

**Camarata  
Masonry Systems**   
Houston, Texas  
Stone Installer

### Other Project Team Members

**Gensler Architects**  
Architect

**Hensel Phelps**  
Design Build Contractor

**S.I.T.E.M.**  
**Global Stone Services**  
**Santucci Group SRL**  
Stone Suppliers/Fabricators

**ISCS Stone Consultants**  
Stone Consultant

### Stone

**Calacatta Tucci marble**  
**Italian basalt**  
**Lueders Gray limestone**  
**Silver travertine**

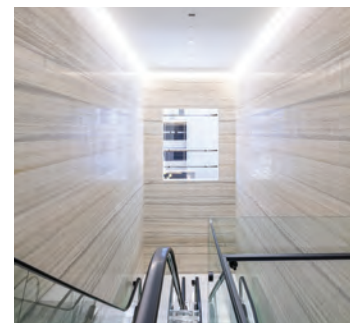
The scope of work on the new twelve-story Travis County Civil and Family Courts Facility includes the main lobby; grand stairs; level one and two public corridors and elevator lobbies; level three through twelve elevator lobbies with accompanying corridors; and 25 courtrooms on levels six through twelve.

The corridors and elevator lobbies are all clad in honed silver travertine installed in a vein-matching pattern. This installation technique for the 200-foot-long corridors was difficult to execute with each piece requiring a specific location on the wall. The outcome is quite impressive since all the veining runs continuously from one end to the other, giving the appearance of one long piece of stone hewn from the mountain.

The wall behind the judge's bench in each of the courtrooms is adorned with polished white marble. The white and gray color of this stone creates the perfect backdrop for displaying the official seal and the United States and Texas flags.

The most eye-catching components of the main lobby are the travertine grand stairs and the feature wall which is clad in 4" thick vein-matched silver travertine. The stone pieces are set at three different depths, giving the look of varying thickness across the wall. The stair treads, risers, and stringers are mitered and epoxied together to give the appearance of one solid cubic piece rather than several thin veneer pieces. Behind the feature wall is an escalator that runs from the first floor to the second floor. The walls that surround this escalator are clad in vein-matched silver travertine which allows you to follow the veining around all four walls without interruption.

The incorporation of the various types of stone and veining techniques and the precise placement of the stones results in a thoughtfully designed facility that will serve Travis County for decades.






## Kitchen/Bath

# No Bad Days Weems, Virginia



All photos courtesy of ROSANNAROBIN atelier

### PINNACLE AWARD RECIPIENT

**ROSANNAROBIN atelier**   
North Bergen, New Jersey  
Design Firm/Stone Consultant

### Other Project Team Members

**Brazilian Best Granite**   
Stone Supplier/Fabricator/Installer

### Stone

Shelf Cloud marble

“No Bad Days” is no ordinary name for a home. The name was chosen because it embraces the client’s spirit of living in a positive moment.

For this home nestled on a river, the design objective required that the eco-systemic exterior perspectives be mirrored in its interiors. The kitchen “must haves” were to incorporate the water with reflected and direct views, to imitate the river’s current and cultivated oyster beds, and to use their favorite colors of brown and blue. The client asked: “Why define a kitchen as a place to cook when it can be created as an artistic rendering of air, light, and earth— a sensory perception that evokes a response, a place where family and friends engage, interact, react, and taste?”

The Shelf Cloud marble was intentionally chosen for its movement and colors. It personifies the river’s ebb and flow and its cultivated oyster beds, creating a spatial and visual continuity between the full height slab focal wall, the waterfall peninsula, and the river.

The client initially wanted quartzite. Her main concern was the maintenance and upkeep of marble. For the designer, the main challenge in executing her design vision was that she was 365 miles to the north of the residence. There was an out-of-order methodology to construction and installation by all trades. Site visits commanded that the natural stone installation be revised: seams had to be blended, gaps fixed, and part of the counter removed and re-cut.

The slab focal wall and well-placed mirror create an imaginative arrangement and understanding between interior and exterior. The semi-gloss ceiling creates a “Versailles effect” with the polished counter. Nature’s essence becomes a fraternal twinning aesthetic.





## Kitchen/Bath

# Guntersville Kitchen Remodel

## Guntersville, Alabama



All photos by Ben Stark Film

### PINNACLE AWARD RECIPIENT

**Ceramic Harmony** 

Huntsville, Alabama

Stone Consultant/Fabricator/Installer

### Other Project Team Members

**MM Interiors**  
Designer

**Antolini Luigi & C.S.p.A.**   
Stone Supplier

**Kevin Stark**  
Tile and Stone Installer

### Stone

**Calacatta Macchia Vecchia**  
**Super Extra marble**  
**Bronze Amani marble**

The clients for this kitchen remodel project in Guntersville, Alabama worked with Ceramic Harmony 16 years ago on a custom bar countertop. When they were ready to renovate their kitchen, they requested the use of Ceramic Harmony to their design firm. A local custom cabinet design firm was also pulled into the planning stages.

The client wanted to modernize the home's Old-World look and for the kitchen to be separated from the living space, yet not too open. To satisfy this request, the team created a tunnel pass through space lined with Italian terracotta tile to direct traffic and break up the space. When it came to the color scheme of the kitchen and further finish planning, Calacatta Macchia Vecchia Super Extra 2cm honed marble slabs were selected from Antolini in Italy. Ceramic Harmony's owner was drawn to the unique characteristics of this block. The addition of the Bronze Amani 2cm honed marble, also from Antolini, served to visually break up some of the strong Macchia Vecchia Super Extra colorations.

Once the slabs were selected, the future use and layout were suggested through several hand renderings, as well as digital mockups using the Prodim Factory Layout software by Proliner. The final layout was determined by the client and the designer in a digital layout session where specific portions of the material were featured in different areas such as the hood, hood splash area, and waterfall edges on the island. Special brackets were installed to seamlessly support the cantilevered Amani bar.





## Public Landscapes/Parks/Memorials

# Crawford Memorial Park “Comunidad” Public Art Project

Dallas, Texas



All photos courtesy of Dee Brown, Inc.

### PINNACLE AWARD RECIPIENT

**Dee Brown, Inc.**   
Richardson, Texas  
Stone Installer

### Other Project Team Members

**Brad J. Goldberg**  
Artist

**Coldspring**    
Stone Supplier/Fabricator

### Stone

**Kenoran Sage granite**  
**Golden Brasil granite**  
**Mesabi Black® granite**

Crawford Memorial Park is a long-established and beloved 250-plus acre public park. It provides peaceful settings within the quick-paced DFW Metroplex. With future developments planned, the east peninsula was selected as the next area to be addressed.

Sited within an oak grove, this project was envisioned as a community gathering space. Prominent artist Brad J. Goldberg was commissioned for a design to facilitate events like weddings, reunions, and quinceañeras, while also serving daily use needs. To accomplish this the artist developed four feature elements.

These defining elements would need to display visual prominence while being low-maintenance and durable. For this project, the artist would again opt to utilize stone. After consideration of coloration, quarry block sizes, and other material attributes, Kenoran Sage, Golden Brasil, and Mesabi Black granites were chosen.

Community Table 1 is a 78' long elliptical element and the project's centerpiece. Here Mesabi Black pedestals support Golden Brasil tabletops surrounded by cubic Kenoran Sage benches. West toward the peninsula's point is The Platform. Here, a stage is formed by a concrete foundation that supports the 9' x 4' x 5" thick Golden Brasil granite slabs. Trees border The Platform to the west, while the east side is open for viewing events. The Seating Area is the third element and is southernmost. Here three Golden Brasil blocks of 4'-6" x 8' x 17" thick dimension form seating in an elliptical footprint. The final element is Community Table 2, which occurs along the northeast tree line. It emulates Community Table 1 but is just 24' long and designed for smaller gatherings.

Installation was completed in 4 weeks by the setting crew and artist alongside. No stones were broken, and the opening ceremony took place as scheduled.







## Public Landscapes/Parks/Memorials

# Reston Town Center Fountain Plaza Renovation

## Reston, Virginia



All photos courtesy of Lorton Stone LLC

### PINNACLE AWARD RECIPIENT

**Lorton Stone LLC**   
Springfield, Virginia  
Stone Installer

### Other Project Team Members

**Sasaki Associates, Inc.**  
Designer

**James G. Davis  
Construction Corporation**  
General Contractor

**Structural Stone LLC**   
Stone Supplier/Fabricator

**Polycor**    
**Granites of America**   
Stone Quarries

### Stone

**Bethel White granite**  
**Jet Mist granite**

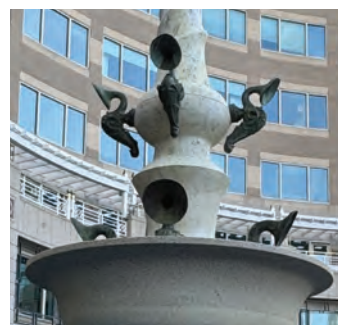
The Mercury Fountain has been the heart of Reston Town Center since the early 1990s. The fountain was carved from Carrara marble and topped with a bronze statue of Mercury. Thirty years of weather resulted in severe deterioration of the marble. A 2023 renovation of the fountain plaza included replacement of the deteriorated fountain bowl and pedestal, as well as a redesign of the lower fountain base. The new contemporary design incorporates tiered splash ledges, and a patterned feature wall fabricated from Jet Mist granite, as well as perimeter walls fabricated from Bethel White granite. Other enhancements to the plaza included improved seating and circulation as well as new landscaping.

Accurate replication of the Mercury Fountain's twisted form was accomplished using two methods. First, the fountain was laser-scanned to develop a 3D digital model of the pedestal and bowl which was used to develop the CNC programming. Second, molds were made of the existing pedestal and used to cast a full-size model that was shipped to the fabricator and used for refining the details of the pedestal. The CNC work took roughly six weeks to carve out the forms of the pedestal and bowl.

The new feature wall included a unique caduceus pattern that was sandblasted into the dark granite. The pattern mimics the caduceus staff held by Mercury at the top of the fountain.

Reinstallation of the Mercury Fountain elements was challenging. Workers had to "thread the needle" using a crane to lower the 6,000 lb. fountain pedestal, the 9,000 lb. bowl, and the original marble topper over the existing supply piping and match the elevations of the piping outlets.

The plaza renovation has returned the Town Center's treasured Mercury Fountain back to the Reston community while providing a more inviting and contemporary atmosphere for social gatherings and public events.





## Renovation/Restoration

# Saint Agnes Catholic Church Arlington, Virginia



All photos courtesy of Rugo Stone LLC

### PINNACLE AWARD RECIPIENT

**Rugo Stone LLC** 

Lorton, Virginia

Stone Consultant/Supplier/  
Fabricator/Installer

### Other Project Team Members

**PAE Architecture**  
Architect

### Stone

Botticino Classico marble  
Rosso Verona Magnaboschi marble  
Bianco Carrara marble  
Calacatta Van Gogh marble  
Red Jasper marble  
Giallo Siena marble

In 2021, Rugo Stone embarked on an ambitious renovation project for Saint Agnes Catholic Church, culminating in its August 2023 completion.

The project scope included: restoration and repurposing of the altar of sacrifice; furnishing and installing a new mensa, intricate carvings, and inlays for the altar of sacrifice; design and installation of a new rear altar, tabernacle, baptismal font, and ambo; creation of three new side shrines with Calacatta Van Gogh marble back walls; the addition of two angel holy water font statues made of Carrara marble; and furnishing and installation of new marble flooring in the sanctuary. The altar of sacrifice, ambo, and side shrine bases were made with Botticino Classico marble, complemented by ornate Giallo Siena marble columns with Corinthian capitals.

The ambo was designed with 4-3/4" veneer panels with the assembly designed for a monolithic appearance, featuring a Red Jasper marble cross on the front and detailed micro marble carvings embellished with 24-karat Venetian gold mosaic tesserae. The side shrines were decorated with hand-carved tracery, and the two angel holy water font statues were developed using advanced 3D scanning technology. The baptismal font bowl was made from a solid Botticino Classico block, with a shaft of Giallo Sienna and Red Jasper, featuring an intricate rope carving with custom-textured finish in contrast with the polished finish everywhere else on the font.

The project presented several challenges, particularly in fabricating the altar of sacrifice. Ensuring that each piece fit perfectly while maintaining clearances and alignments was crucial. Rugo dry-assembled all components in their shop for the architect's review prior to field installation.

The intricate floral carving on the right-side shrine required meticulous hand sketching, 3D modeling, CNC machining, and hand carving.





## Renovation/Restoration

# Saint Jude Catholic Church Peoria, Illinois

### PINNACLE AWARD RECIPIENT

**Rugo Stone LLC** 

Lorton, Virginia

Stone Consultant/Supplier/  
Fabricator/Installer

### Other Project Team Members

**McCreary Architects**  
Architect

### Stone

Rouge Griotte marble

Verde Issorie marble

Fior di Pesco Light marble

Grigio Carnico marble

Bianco Carrara marble



All photos courtesy of Rugo Stone LLC.

The Saint Jude Catholic Church project in Peoria, Illinois is a prestigious endeavor that began in July 2022 and completed in November 2023.

Rugo Stone's scope of work in this new church included the supply and installation of several key elements. The entire project was fabricated in-house by Rugo Stone. The sanctuary floor is a striking checkerboard pattern composed of five different colored marble pavers.

The altar is a masterpiece featuring cubic marble columns and finely carved capitals. It is adorned with ornate moldings and embellished with 24 karat gold mosaic inlay featuring the Lamb of God.

Matching the grandeur of the main altar, the rear altar also received ornate moldings and cubic columns with carved capitals, ensuring a cohesive and opulent design throughout the sanctuary.

Designed with free-standing columns in Bianco Carrara and red marble inlays, the font resonates with symbolic significance, representing the Sacred Heart. The contrasting cool tones of grey, darker grey, and green marble create a lush and unique design that stands out from traditional baptismal fonts. The font basin is inlaid with Venetian glass mosaic.

The materials used in this project were meticulously handpicked by Rugo Stone, ensuring the highest quality and first-choice marbles that contribute to the overall elegance and durability of the sanctuary's design elements.

The altar's intricate carvings are a fine blend of modern CNC machining and traditional hand carving techniques. This combination not only ensured precision and consistency but also honored the craft's rich history. The project was completed on schedule, demonstrating efficient project management and coordination among all involved parties.





## Residential – Single Family

# Private Residence-Bachelor Gulch

## Bachelor Gulch, Colorado



All photos by Stovall Studio, courtesy of The Gallegos Corporation

### PINNACLE AWARD RECIPIENT

**The Gallegos Corporation**   
Wolcott, Colorado  
Stone Fabricator/Installer

### Other Project Team Members

**Ruard Veltman Architecture + Interiors**  
Architect

**Gavin Historical Bricks**  
**Select Stone**  
**Walker Zanger**   
Stone Suppliers

**Chabot – Selkirk Quarry**  
Stone Quarry

### Stone

**Gascogne Beige limestone**  
**Reclaimed granite cobbles**  
**Selkirk granite**

This unique, ultra-custom home incorporated some challenging uses of natural stone. Selecting the stone to be used for the exterior and interior stone veneers utilized several mockups before selecting a granite veneer from Manitoba, Canada. The stone selected was shaped in such a way that no surface on each stone was flat and had to either be chopped on a stone splitter or chiseled by hand. The exterior and interior stone veneers were installed with a dry stack appearance joint and fit together with great precision.

After installation was completed, the owner decided to change the interior stone veneer into a veneer with grout joints. Masons had to grind each joint very carefully to maintain a uniform width to allow for grout installation. The mantel stones were selected to be massive boulders out of the same granite material. These stones weighed in excess of 10,000 lbs. each. Gallegos trimmed the boulders down to the desired shape and hollowed out the back of the stones with hydraulic chainsaws and a pin-and-feather method using hammer and pins. They then installed these stones with a Spyder crane and pulleys.

The 4,000 sq. ft. driveway was installed in a herringbone pattern using hundreds' year-old reclaimed cobblestones from the northeastern United States. Not palletized, but delivered by tandem dump trucks, Gallego's crew manually removed old mortar and dirt prior to installation by tumbling the stone in a concrete mixer filled with gravel and water. The end results looked similar to the streets from which the cobbles were reclaimed, exactly as the owner had desired.



# 2024 Excellence in Leadership



**Kim Dumais**  
Miller Druck  
Specialty Contracting



Kim Dumais has exhibited significant leadership to the Natural Stone Institute throughout 2024. She has been a strong voice of direction for a recently launched marketing committee established to address key association goals for growing membership, engaging design professionals, and promoting natural stone. Together with the 2025 board of directors, this committee will lead the vision for a rebranding effort, robust social media strategy, and website refresh aimed to improve member navigation and better showcase the many resources offered by NSI.

When NSI partnered with ASSIMAGRA, a natural stone trade association from Portugal, to host a natural stone architectural event at the Perelman Performing Arts Center in New York City, Kim led the effort to attract leading architects and designers while also coordinating most onsite logistics given her deep knowledge of the local market. This event drew seasoned architects and emerging designers, inspiring them all with the positive attributes of natural stone.

*"Kim is a strong advocate of the association and natural stone. She went above and beyond with both projects and is truly deserving of this recognition."*

Jim Hieb, CEO – Natural Stone Institute



## Natural Stone Scholarship



**Courtney Myrick**  
Triton Stone Group

Courtney Myrick's obsession with natural stone began in 2020 when she accepted a Design Consultant position with Triton Stone Group in Birmingham, Alabama. With a boom in construction despite the uncertainty and chaos caused by the pandemic, she learned from mentors to quickly immerse herself and learn as much as she could. Her commitment to this industry is deeply rooted in the beauty of the stone itself and the amazing people who come together to make it something special.

After 3 years in Birmingham, Courtney transferred to Triton's Raleigh, North Carolina branch, where she was shocked at the difference between the two markets. Raleigh was growing and competing with eleven slab wholesalers and three newcomers on the horizon. Courtney was surprised at the lack of variety and attention to detail when she visited those competitors' warehouses. She realized the Triton way of education and training, fabricator guidance, and offering a variety of inventory has set them apart. This has become key to her success, using developing skills to help their customers, while witnessing the transformative power of natural stone in architectural and design projects.

This new market has been a challenge, but in her position Courtney's knowledge and passion has been infectious, sharing both traits with Triton's customers. She feels rewarded seeing new stones embraced by this market, delivered to their fabricators, and become part of someone's home.

Courtney is excited to be a part of a company like Triton that gives her an outlet to share her passion for natural stone and welcome each opportunity to make a positive impact in the industry for years to come.

Congratulations to Courtney Myrick.



**Aya Mubaarak**  
ABC Worldwide Stone

At the beginning of the pandemic, Aya Mubaarak was working in residential real estate development, but she had become disillusioned with the constant drive for profit and regularly witnessed disregard for material waste and environmental consumption. She knew she wanted to be more involved with the material selection, design, and specification processes, where she might be able to advocate for change in this area.

Aya looked to the natural stone industry and found purpose and power through a sales position within a family-owned stone fabrication company. Here she met people from all walks of life and assisted them with the transformation of their environment. Typically working primarily with granite and quartz for residential interiors, Aya became eager to work with more exotic materials and see stone in new applications, which led her to ABC Worldwide Stone in New York, an innovator in the industry.

At ABC, Aya is now exposed to a wide range of stone materials across a breadth of applications, from cubic and sculptural pieces to dimension stone for landscape and hardscaping. She believes the provenance, history, and tradition of stonemasonry are things that should be preserved, passed down, and continuously advanced.

In this next phase of her career, Aya hopes to learn in greater depth how natural stone compares to other building materials in terms of sustainability and human health. She sees herself consulting with key stakeholders in the architecture and design community about the benefits, uses, and rich design multidimensionality that stone can offer any project.

Stone has taught her to be both accepting of herself and others, because being "perfectly imperfect" is what makes natural stone the powerhouse that it is. Aya says, "each and every one of us is unique and there's a place for all of us, even if we have a few flaws."

Congratulations to Aya Mubaarak.



**Anabell Suggs**  
Marble Today Inc.

Currently the lead CAD Programmer for Marble Today Inc. in Palatka, Florida, Anabell Suggs joined the company in 2021 when she was just 19. She was hired to enter job details into scheduling software, then quickly moved into CAD Programming. She has worked her way up to her current position, where she color-matches and vein-matches overlays, programs all machines, digitizes sinks, and performs estimations. Anabell also trains everyone who comes into the CAD room, creates all CAD SOPs, and solves issues in the shop.

Anabell believes the stone business is more than just countertops, cladding, or flooring. It's sometimes like creating works of art. Seeing customers fall in love with stone makes all the time, effort, and challenges of her work worthwhile. She views being part of a job from beginning to end as a great experience that unites different perspectives and reinforces how much teamwork and communication means to success.

Anabell would love to keep growing and become more knowledgeable with goals of becoming the CAD Manager, and possibly continue up the management ladder. She wants to make a difference at Marble Today and in the stone business, believing the more she learns and the more involved in the fabrication process she gets, the more she loves and wants to stay in this business. Her supervisors are the reason she wants to continue to learn more so she can make an impact on the stone industry and can't imagine where she would be without their knowledge, talent, and caring.

Congratulations to Anabell Suggs.

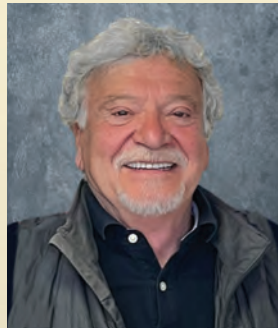


*“I have had the privilege of working closely with Lawrence at Traditional Cut Stone since we founded the company with our partner David Tyrrell in 1998. Over these years, I've witnessed his unparalleled artistic talent, confirming his status as a true master in the art of stone carving.”*

Richard Carbino, Co-Founder – Traditional Cut Stone

*“Lawrence is more than just a craftsman. He is a craftsman and a true artist. He listens well to what his client's want and turns their dreams into reality. His works will survive many generations. Lawrence brings a passion to his work and builds excitement with this clients during the process. His finished pieces are marvels.”*

Ron Vetter, CEO – Vetter Stone Company



**Lawrence Voaides**  
Traditional Cut Stone

Exceptional contributions, outstanding skills, and unwavering dedication to the art of stone carving are a few reasons why David Tyrrell, managing director at Traditional Cut Stone, nominated Lawrence Voaides as the 2024 Craftsman of the Year.

According to Tyrrell, Lawrence is a true visionary and master craftsman in the field of stone carving. With over 40 years of experience, his expertise and artistic prowess have made a profound impact on the industry. Since 1998, as co-founder of Traditional Cut Stone in Mississauga, Ontario, Lawrence has nurtured the company into a leading force in the field, renowned for its unparalleled artistry and craftsmanship.

Originally trained in Romania, Lawrence brought with him a deep-rooted passion for the ancient art of stone carving. His masterpieces, ranging from renowned historic monuments to stone restoration projects across Europe and North America, stand as testaments to his exceptional talent and unwavering commitment to excellence. Lawrence's ability to breathe life into raw stone, transforming it into awe-inspiring works of art, is truly remarkable.

Under Lawrence's artistic direction, Traditional Cut Stone has become home to North America's largest and most respected art department in the stone carving industry. His vision and leadership have fostered an environment of innovation and artistic

exploration, pushing the boundaries of what is possible with stone as a medium. Lawrence's guidance and mentorship have inspired countless artisans, ensuring the preservation and advancement of this ancient craft for generations to come.

Beyond his technical mastery, Lawrence possesses a deep understanding of the inherent qualities of stone. His creations reflect a profound appreciation for form, texture, and the timeless beauty found within each unique piece. Lawrence's works evoke a sense of awe and wonder, leaving an indelible mark on all who have the privilege of experiencing them.

A visit to Traditional Cut Stone by the Natural Stone Institute board of directors, past presidents, and staff during the 2022 midyear board meeting showcased Lawrence's talents to the group. His humble, charming personality intrigued the group as they viewed clay models, prototypes, and museum-like carved relics scattered around the studio spaces.

His dedication to his craft, his contributions to the industry, and his positive impact on the community at large make him an exceptionally deserving recipient of this recognition.

Congratulations to Lawrence Voaides, the 2024 Craftsman of the Year.



*“Susan’s influence extends beyond her business accomplishments. She is a role model and a source of inspiration for women in the stone industry and beyond.”*

Mikkel Dohn Moser, Co-Owner – Fauske Marble by Moser

*“Susan has not only shared her extensive knowledge and passion for natural stone but has also been instrumental in guiding my transition to full-time work in this field, as I started working for her in late February of 2024. Her generosity in imparting knowledge and her willingness to mentor others exemplify her dedication to fostering growth within the industry.”*

Martine Eidissen Nymo, Sales & Marketing – Fauske Marble by Moser





## WOMEN IN STONE PIONEER AWARD



### **Susan Moser**

Fauske Marble by Moser  
Moser & Moser

In a letter nominating Susan Moser for the 2025 Women in Stone Pioneer Award, Mikkel Dohn Moser praises his aunt's promotion of gender equality as not only exemplary, but also deeply inspirational and deserving of recognition.

As a young child, Susan Moser used to play in her grandfather's factory on the Marble Pier in Copenhagen. When her grandfather later sold the factory to her father, he enlisted Susan as a master apprentice, to ensure she wasn't just hanging around, but rather learning everything about the business. When he sold the factory in 2004, Susan stayed on to help the new owners and make sure the factory was in good hands.

She then moved on to work in an engineering company and later became director at Zurface, another Danish natural stone company, specifying stone.

After a couple of years, Susan launched Danish company Moser & Moser, where she still leads a team of professionals who provide expert consulting services for natural stone projects across the globe. Some of her greatest projects include the Perelman Performing Arts Center in New York, and the Galleria Mall in Abu Dhabi, among many others.

Special to Susan was a stone sourcing trip to southwest Africa in 1993. She fondly recalls dancing with women of the Himba tribe in Namibia while in search of a Sodalite Blue marble quarry. She managed to find the quarry and learned it was run by Germans.

Today, Susan inspires others through her remarkable leadership of two companies: Moser & Moser, and Fauske Marble by Moser, which operates the historic Norwegian Rose marble quarry in Norway. Under her leadership, the quarry has not only maintained its historical significance but has also expanded its reach by offering

not only Norwegian Rose, but various other marbles such as Antique Verdatre and Hermelin Dark and Light.

Susan also has the distinction of being one of the first female consultants in the United Arab Emirates and Saudi Arabia. If nothing else, this shows a dedication to overcoming barriers and gender prejudice.

Through her leadership, she demonstrates that it is possible to achieve excellence and make a meaningful impact in a traditionally male-dominated field. She has emerged as a beacon of change, advocating tirelessly for the recruitment, retention, and advancement of women within the stone industry. She demonstrates an unwavering commitment to fostering an inclusive environment where women can thrive. Her efforts have significantly influenced the landscape of the stone industry, setting a benchmark for others to follow, while inspiring countless other young people to pursue careers they might not have otherwise considered.

With over 40 years of natural stone industry experience, Susan regularly speaks at industry conferences and events, sharing insights and experiences to motivate others. Her commitment to sustainability sets her apart. She is deeply engaged in promoting the use of natural materials in construction, recognizing their environmental benefits and their potential to shape a more sustainable future. Susan's commitment to re-wild areas no longer in use by the quarry demonstrates her forward-thinking approach to land management that contributes significantly to environmental conservation and sustainable development.

Susan is a true pioneer who has dedicated her career to advancing the roles of women. Her relentless advocacy, innovative initiatives, and inspirational leadership will continue to resonate for years to come.

Congratulations to Susan Moser, the 2025 Women in Stone Pioneer.



*“Jeff truly has genuine curiosity and concern for everyone around him and cares for the industry and its people. He understands how important being a servant leader is to a nonprofit trade association.”*

Blake Christensen, Owner – Valley View Granite

*“Jeff is not only a leader in his field but also an incredible person whose passion and integrity shine through in everything he does. His ability to motivate and uplift those around him is unparalleled.”*

Katie Jensen, President – Triton Stone Group



# Person of the Year



**Jeff Erickson**

Cutting Edge Countertops

The Person of the Year award is presented annually to an individual who has provided extensive support to the association’s executive team during the year. As a dedicated leader and tireless volunteer, Jeff Erickson of Cutting Edge Countertops is recognized as the 2024 Person of the Year.

With over eighteen years of natural stone and countertop experience, all with Cutting Edge Countertops, Jeff’s involvement and dedicated service to the natural stone industry has grown steadily over the past decade. Today he serves on the Natural Stone Institute’s board of directors and executive committee. Jeff is active with the Gary Sinise Foundation’s R.I.S.E. program and is a generous Natural Stone Foundation donor.

CEO Jim Hieb explains why Jeff was this year’s choice. “Jeff has become a ‘go-to person’ for me to discuss industry strategy and gain perspective. I am most impressed with his ability to ask questions beyond his own industry segment so that all members benefit. Jeff is extremely humble and will often describe himself as a simple ‘operations guy.’ That description couldn’t be farther from the truth – he is a gem!”

Beyond his board service, Jeff’s involvement has been impactful, serving as a champion for employee safety and building relationships



with other associations, including the Rockheads Group, Stone Fabricator’s Alliance, and ISFA. He is also serving his last year on NSI’s Gary Sinise Foundation R.I.S.E. committee.

Jeff is a constant advocate of member needs. He consistently challenges the association to focus on how NSI helps members keep their employees safe, stay informed, utilize NSI programs to strengthen their businesses and employees, and provide networking opportunities to engage with both stone professionals and architects and designers.

Jeff has previously shared why he is so involved: “I wanted to ‘give back’ and be involved in a community outside our company’s environment/locale. NSI represents the ‘soul of the business’ and you are exposed to stone professionals from other industry segments. NSI exposes you to a whole new world where you meet people you would not have met without NSI. You gain perspective on your own business when you learn about other people’s businesses. That is why I especially love NSI’s fall study tour, and the connections made at that event.”

Jeff’s passion for NSI also comes out when you hear him tell fellow industry colleagues, “you can’t afford to not be a member.”

Congratulations to Jeff Erickson, the 2024 Person of the Year.



*“Scott has made extraordinary contributions to the natural stone industry and the association community. He is the consummate NSI member: active in the larger community, engaged with other members, innovative, and industrious. Scott’s legacy will endure through the accreditation program and other contributions for years to come”*

Jim Hogan, Sr. Vice President – Carrara, Inc.

*“Scott’s patient and thoughtful approach to decision making and kind and gentle nature are examples for all of us to follow.”*

Brett Rugo, Founder/President – Rugo Stone LLC



**Migliore**

AWARD FOR

Lifetime Achievement

Scott Lardner's father Vince started Rocky Mountain Stone in 1963 as a supplier of building and landscaping stone. It has since expanded into every aspect of the natural stone industry.

Vince Lardner was a staunch supporter of the Building Stone Institute, attending many BSI conventions and events, which is where Scott and his siblings first learned the value of a trade association. Scott would later become heavily involved in the Marble Institute of America, while brothers Jim and Tim would become active in the BSI and Allied Stone Industries groups.

Scott followed his father into the family business and expanded operations throughout the Southwest. Rocky Mountain Stone has been recognized as a leading source for natural stone in New Mexico for over 60 years. Broadening their reach, New Mexico Travertine began its quarrying operations in 1985 and then expanded into sandstone and flagstone quarries in Milagro, New Mexico and several limestone quarries in Texas and Kansas.

In 1990 Scott assumed the presidency of Rocky Mountain Stone, a position he maintains today. He also has partial ownership in New Mexico Travertine and often collaborates with brother Jim on business operations for both companies.

Scott's involvement as a businessman is not limited to Rocky Mountain Stone, but extends to local, state, and regional impacts through organizations like Rotary International, Albuquerque Catholic Foundation, New Mexico Amigos promoting New Mexico businesses around the United States, and Counters for a Cause, which donates a percentage of sales to local charities that benefits children, veterans, and the homeless. Scott was also one of the original members and a past board director of the Artisan Group, a preeminent buying group sharing best practices and representing the largest markets in the US.

Through his natural stone industry service, Scott has amassed an impressive resume with NSI. He served on the board of directors from 2002-2006 and was board president in 2005. In this time



**Scott Lardner**  
Rocky Mountain Stone



Scott would oversee the hiring of past MIA CEO Gary Distelhorst, guide the sale of StonExpo to Hanley Wood, provide the framework for what are today known as Stone Summits, and strongly advocate for the creation of safety training videos and guidebooks that have been widely expanded upon over the past 20 years.

But perhaps Scott's most pivotal contribution during his leadership tenure was the conception, development, and implementation of the Accreditation Program. This well-established NSI initiative is the cornerstone of an effort to recognize and distinguish those companies involved in the natural stone industry that have met the highest standards of performance and excellence in fabrication and installation. Today many project specifications require use of an NSI accredited company – a vision Scott laid out.

Like many diligent NSI leaders, Scott remained active after his board service, providing guidance for the radon crisis, serving as a panelist at Stone Summits and trade show sessions, and continues to assist NSI with the creation of many of its annual awards. In 2024, Scott's support of safety training is as evident as it was 20 years ago as he pledged to serve as a resource to the Spanish translation of the Silica & Slab Safety training certificate.

Family and friendships run deep for Scott. Growing up in the family business, it isn't surprising that Scott's son Sean has joined Rocky Mountain Stone as General Manager. Industry colleagues remain cherished close friends with frequent hunting and fishing adventures and even teaming up for displays of support at industry gatherings.

Scott's 40 years of service to the natural stone industry have helped guide NSI into the organization it is today. He frequently shares two valuable lessons of leadership for others to consider. "If you aren't the lead dog, the view never changes" and "there has never been a wrong time to do the right thing."

Congratulations to Scott Lardner, the 2024 recipient of the Migliore Award for Lifetime Achievement.



**Evan Cohen, Quality Marble & Granite**

his wife and children to celebrate and pay tribute to our nation's severely wounded heroes. Personal engagement symbolizes Evan's dedication to the program and his desire to give back to others."

Evan's contributions to R.I.S.E. extend far beyond his business. He volunteers countless hours advocating for the program and sharing its importance with others. Having served on the Natural Stone Institute R.I.S.E. committee for several years and as the committee chair in 2023, Evan has helped expand the program support and made it a priority for our association. Through Evan's natural leadership abilities and devotion to this worthy cause, the industry has embraced our nation's heroes and continues doing a little more to make their lives better.

Congratulations to Evan Cohen, the 2024 recipient of the David Fell Spirit of Service award.

Evan Cohen, of Quality Marble & Granite, exemplifies a path others aspire to follow. His contagious enthusiasm for the Gary Sinise Foundation R.I.S.E. program has been a major driver for him personally and professionally. It is because of his belief in giving back to others and embodying the spirit of service that he encourages others to get involved and do the same.

Evan's company has contributed natural stone to several home projects and his employees often ask when the next home project will occur. The entire team ensures that each veteran's stone selection experience is memorable and meaningful during their visit to Evan's facility.

Jonathan Mitnick of CCS Stone, and Natural Stone Institute 2025 R.I.S.E. committee chair, shared, "Evan has always demonstrated his passion for the R.I.S.E. program in a personal way. Supplying stone wasn't enough, so he personally attended several home dedications with



**Evan and Lauren Cohen attended a Walls of Honor ceremony for U.S. Army Staff Sergeant Dennet Oregon with their two sons.**



**The Cohen family with U.S. Marine Corps Staff Sergeant (Ret.) Stuart DiPaolo.**



**Patsy Fell-Barker & David Fell**

The David Fell Spirit of Service Award is presented in memory of David Fell, President of BG Hoadley Quarries. David passed away in 2021 and his memory now lives on through this prestigious award. Presented to recognize a company or individual involved with the Gary Sinise Foundation R.I.S.E. program, the award recipient demonstrates the qualities and characteristics of leadership within their organization, the community, and beyond.

*"We are so incredibly proud of this award named for David because it conveys his belief that it's a wonderful world when we give back by helping and serving others with our natural resources. Our nation's heroes put their lives on the line to serve and save us!"*

David's Mother, Patsy Fell-Barker, BG Hoadley Quarries

Special thanks to Mario & Son for generously donating this award.



# NATURAL STONE — FOUNDATION —

## Thank You to Our Generous Leadership Society Donors



**\$100,000+**

Camarata Masonry Systems, Ltd.\*†      Dee Brown, Inc.\*  
 Brenda Edwards†      MSI Charitable Trust\*      Gary Mullard\*  
 Natural Stone Institute\*      Polycor\*      Triton Stone Group\*



**\$50,000-\$99,000**

Antolini\*  
 Genesee Cut Stone & Marble Co.\*



**\$20,000-\$49,999**

Alpha Professional Tools      Buddy Ontra\*†  
 Atlas Marble & Granite\*      Ontra Stone Concepts\*†  
 Jose Antonio Alva\*      PICCO Engineering\*†  
 Arizona Tile\*      Precision Stone\*  
 BG Hoadley Quarries &      Stone Interiors\*  
 Patsy Fell-Barker\*†      TAB\*  
 Miles Supply\*



**\$10,000-\$19,999**

3D Stone, Inc.\*      John A. Papagiannoulis Bros S.A.\*  
 Brekhus Tile & Stone, Inc. /      Kingsway-The Surface Care Experts\*  
 Jeff Brekhus & Scott Polak\*      Leon & Hanna Zanger Foundation  
 Cactus Stone & Tile      StoneLoads, LLC\*  
 Cleveland Marble Mosaic      Rawi & Jacqueline Tabbah /  
 Continental Marble, Inc.\*      International Stoneworks\*  
 Grazzini Brothers & Co.\*      Vermont Quarries Corp.\*  
 Halbert Mill Company\*



**\$5,000-\$9,999**

Artisan Group      Innovative Surfaces, Inc.  
 Artistic Tile\*\*†      Lyons Sandstone\*  
 Cutting Edge Countertops, Inc.      Bob & Charlotte Paul  
 Jim & Christa Hieb\*†      Valley View Granite†



**\$1,000-\$4,999**

Kent Barnow	Tony & Karen Malisani*†	Dan & Dayna Rea†
Bernard Buster	John Malyshko	Jack & Peggy Seiders †
David & Daniela	Marjan Stone, Inc.	Bob & Bobbie Stasswender **†
Carnevale	Bill & Barb Mirch & Family †	Stone Glamour
Coldspring	Ralph Morgan	Tennessee Marble Company*
Joe Dellacroce	Susan Myers †	TexaStone Quarries
Laura Grandlienard**†	Duane Naquin**†	Tompkins Bluestone Co., Inc.
Granite Concepts*	Northern Stone Supply, Inc.	United Marble
Doug & Pam Hammond**†	Greg & Kari Osterhout †	US Stone Industries †
Brian & Wendy Kornet**†	Brie Pfannenbecker	Via Dell'Arte Inc.
Josh Levinson*†	Michael Picco	Dacia Woodworth
Malisani, Inc.	Quality Marble & Granite	Robert Zavagno
	Ramos Marble and Granite, Inc.†	

\* Denotes a multi-year commitment. | † Denotes tribute gifts made "in honor of" or "in memory of."  
 List current as of November 20, 2024.



**Natural Stone Institute**

380 E. Lorain Street • Oberlin, OH 44074

440-250-9222 • [naturalstoneinstitute.org](http://naturalstoneinstitute.org)